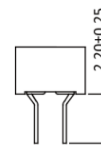
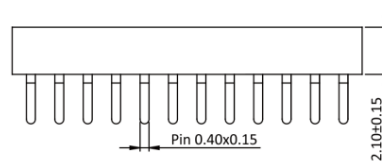
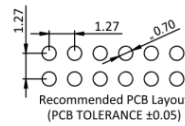
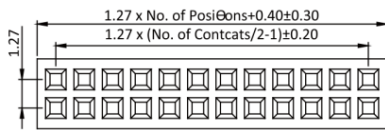


CONNECTOR MANUFACTURERS



Specifications
 Current Rate: 1 AMP
 Insulation Resistance: 1000MΩ Min.
 Contact Resistance: 20mΩ Max.
 Dielectric Voltage: 500V AC for one minute
 Operation Temperature: -40°C to +105°C

Material
 Insulator: Hi-Temp. Thermoplastic, UL 94V-0
 Terminal: Copper Alloy
 Plating: Gold Plated



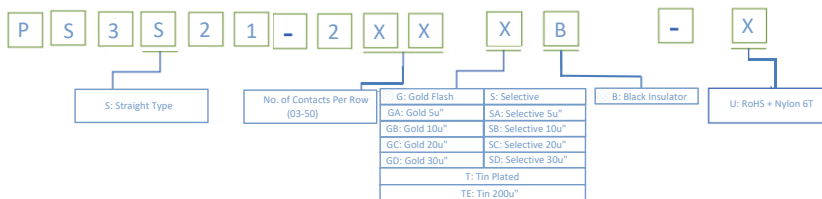
Pin-Female Header 1.27 mm



ROHS

Part No.: PS3S21-2XX-U

ORDER INFORMATION



◎: Standard Recommend